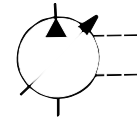




PUMP, VARIABLE DELIVERY PVWJ 014 & 022 WITHOUT CONTROLS

ENGINEERING

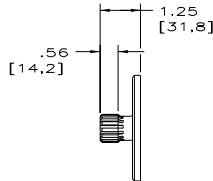
1



Installation

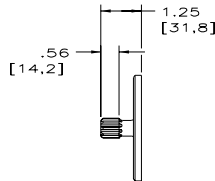
Basic Pump Without Control - Rear Ported

OPTIONAL SAE "B"
SPLINE SHAFT
CODE "C"



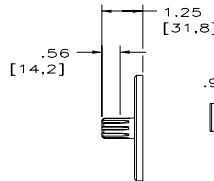
VIEW SHOWING OPTIONAL
SPLINE SHAFT
SAE INVOLUTE SPLINE
13 TEETH, 16/32 PITCH
.859 [21,82] MAJOR DIA.

OPTIONAL SAE "A"
SPLINE SHAFT
CODE "S"



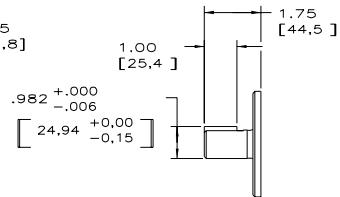
VIEW SHOWING OPTIONAL
SPLINE SHAFT
SAE INVOLUTE SPLINE
9 TEETH, 16/32 PITCH
.610 [15,49] MAJOR DIA.

OPTIONAL SAE "A"
SPLINE SHAFT
CODE "D"

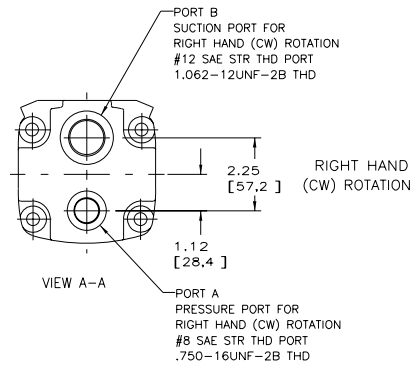
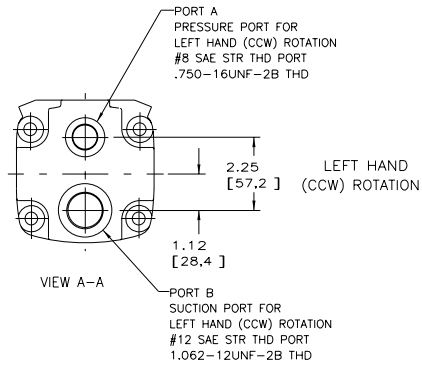


VIEW SHOWING OPTIONAL
SPLINE SHAFT
SAE INVOLUTE SPLINE
9 TEETH, 16/32 PITCH
.625 [15,88] MAJOR DIA.
(INDUSTRIAL VERSION)

OPTIONAL SAE "B"
KEYED SHAFT
CODE "B"

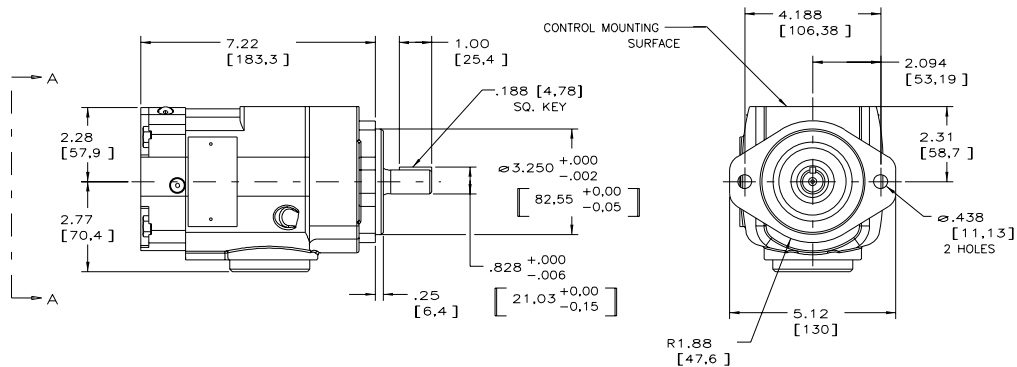
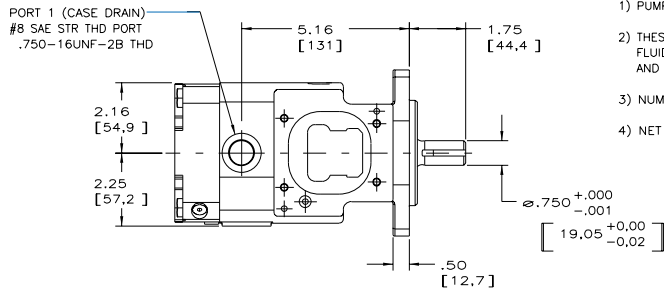


VIEW SHOWING OPTIONAL
KEYED SHAFT
ø.874-.001 [22,20-.025]
W/ .250 [6,35] SQ. KEY



NOTES:

- 1) PUMPS ARE DESIGNED FOR ONE-WAY SERVICE.
- 2) THESE UNITS ARE DESIGNED TO RUN CASE FULL OF FLUID AT ALL TIMES. FILL CASE BEFORE STARTING AND CONNECT DRAIN LINES ACCORDINGLY.
- 3) NUMERICAL DIMENSIONS GIVEN IN INCHES/[MM].
- 4) NET WEIGHT- 24 LBS. [10,9 KG].



520034-102

Telephone: (414) 327-1700
Fax: (414) 327-0532

OILGEAR
2300 So. 51st. Street
Milwaukee, WI USA 53219

Issued: Oct, 2006
DS-47481