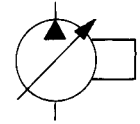


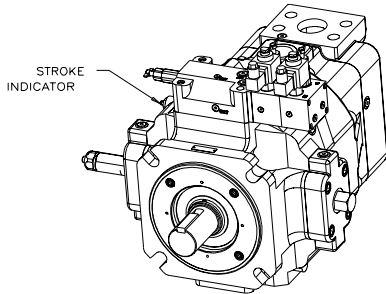
"P-3--" or "P-E--" CONTROLS



Installation Drawing

Triple Pressure Compensator Controls

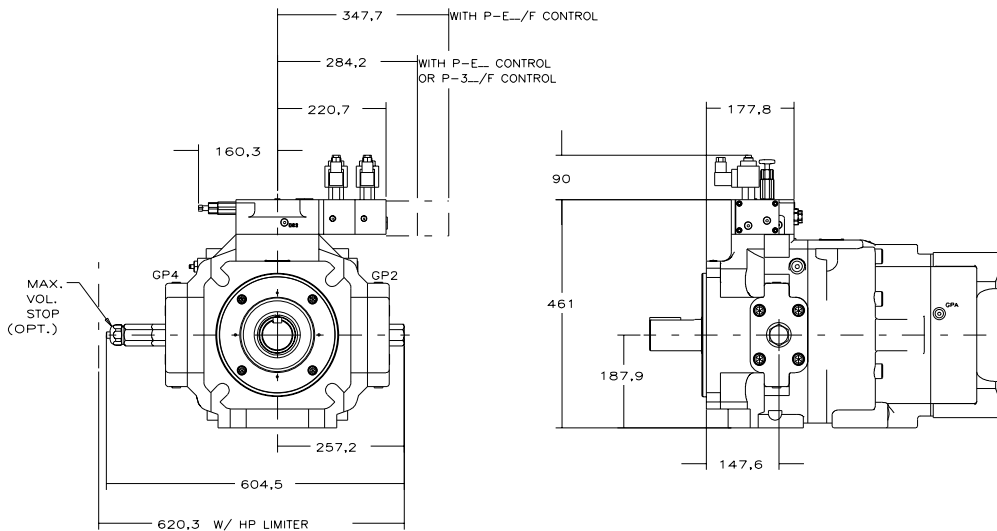
PVV-540-B1B PUMP
WITH P-3_ CONTROL (SHOWN)
AND P-E_ CONTROL



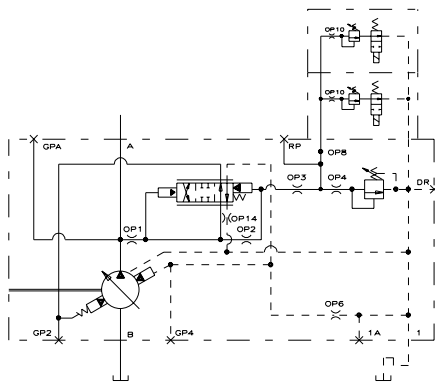
NOTES:

1. PUMPS DESIGNED FOR ONE-WAY SERVICE ARE DIMENSIONED AS SHOWN.
2. THESE UNITS ARE DESIGNED TO RUN CASE FULL OF FLUID AT ALL TIMES. FILL CASE BEFORE STARTING AND CONNECT DRAIN LINES ACCORDINGLY.
3. NUMERICAL DIMENSIONS ARE GIVEN IN MILLIMETERS.
4. NET WEIGHT: P-3_ CONTROL
377 KG SIDE PORTED (SHOWN)
352 KG REAR PORTED
P-E_ CONTROL
382 KG SIDE PORTED
357 KG REAR PORTED

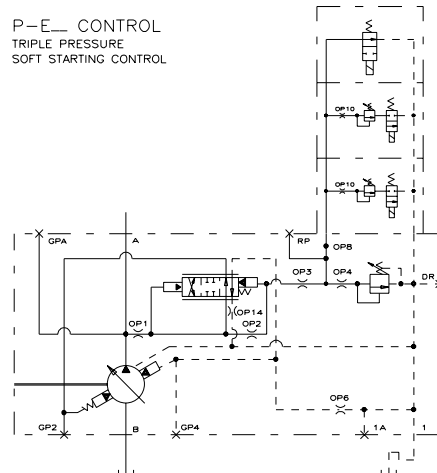
W/ HP LIMITER ADD 11 KG
W/ LOAD SENSE ADD 4.5 KG
5. FOR BASIC PUMP DIMENSIONS SEE: DS-M47940A
6. LEFTHAND (CCW) VERSION IS SHOWN. FOR RIGHTHAND (CW) VERSION, THE CONTROL CAPS, VOLUME STOPS, AND STROKE INDICATOR WILL BE ON THE OPPOSITE SIDES, ASSUMING THAT THE OUTLET IS ON THE TOP.



P-3_ CONTROL
TRIPLE PRESSURE
COMPENSATOR CONTROL



P-E_ CONTROL
TRIPLE PRESSURE
SOFT STARTING CONTROL



519256-306 sh. 7