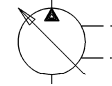


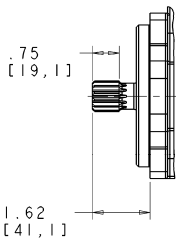
" F1 "



INSTALLATION DRAWING Basic Pump Without Controls - Thru Shaft

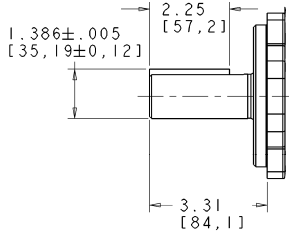
OPTIONAL SAE "B" SPLINE SHAFT (SAE "22-4") (CODE-K)

SAE INVOLUTE SPLINE
13 TEETH. 16/32 PITCH



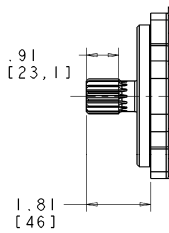
OPTIONAL SAE "C" KEYED SHAFT (SAE "38-1") (CODE-B)

SAE KEYED SHAFT
Ø 1.250 \pm .002 [31,75 \pm .05]
W/ .312 [7,92] SQ. KEY



OPTIONAL SAE "B-B" SPLINE SHAFT (SAE "25-4") (CODE-S)

SAE INVOLUTE SPLINE
15 TEETH. 16/32 PITCH



NOTES:

- 1 PUMPS DESIGNED FOR ONE-WAY SERVICE AND ARE DIMENSIONED AS SHOWN.
2. THESE UNITS ARE DESIGNED TO RUN CASE FULL OF FLUID AT ALL TIMES. FILL CASE BEFORE STARTING AND CONNECT DRAIN LINES ACCORDINGLY.
- 3 NUMERICAL DIMENSIONS GIVEN IN INCHES/[MM].
4. NET WEIGHT- 55 LBS [25 KG].

